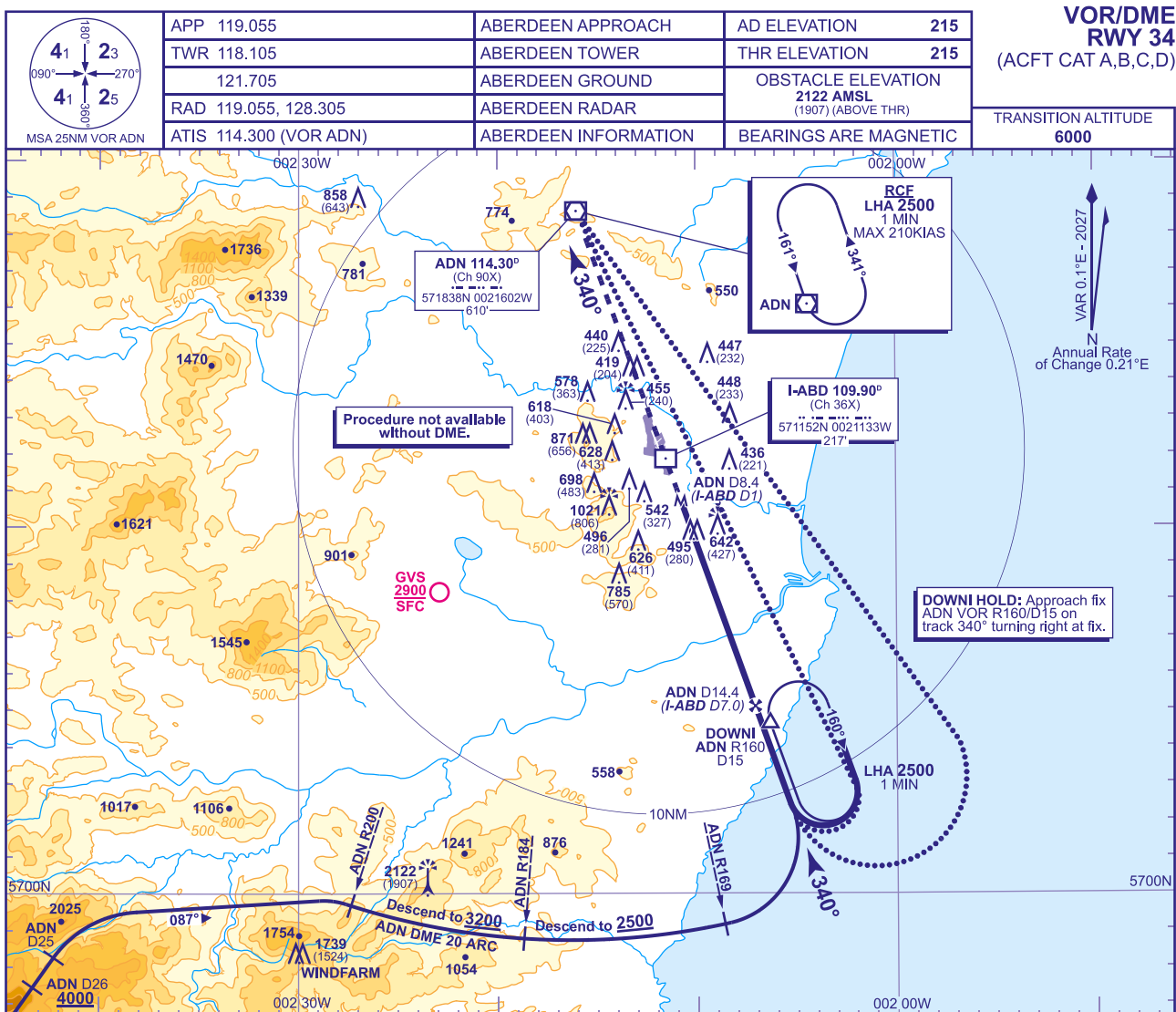
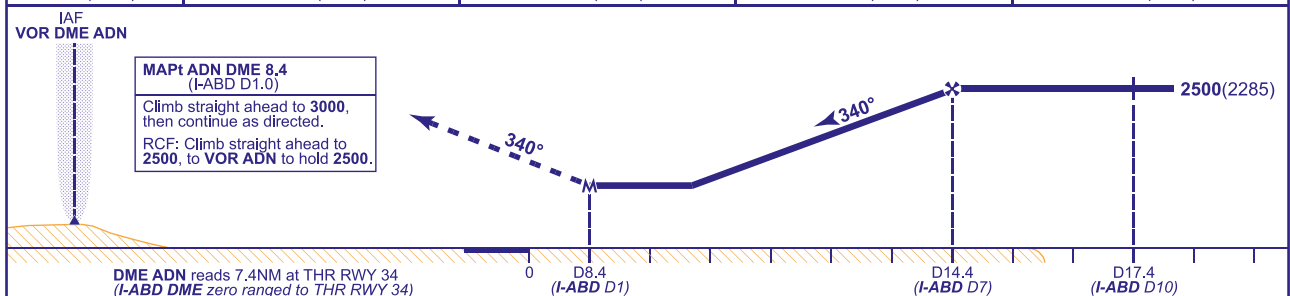


INSTRUMENT APPROACH CHART - ICAO

ABERDEEN/DYCE
VOR/DME
RWY 34
(ACFT CAT A,B,C,D)



RECOMMENDED PROFILE Gradient 5.25%, 319FT/NM				
ADN (I-ABD)	14(6.6)	13(5.6)	12(4.6)	11(3.6)
ALT(HGT)	2370(2155)	2050(1835)	1730(1515)	1410(1195)



Aircraft Category		A	B	C	D	Rate of descent	G/S KT	160	140	120	100	80
OCA (OCH)	WITH DME	1060(845)	1060(845)	1060(845)	1060(845)		FT/MIN	850	740	640	530	430
VM(C)OCA (OCH AAL)	Total Area	1130(915)	1330(1115)	1430(1215)	1430(1215)							
	East of RWY 16/34	1060(845)	1060(845)	1060(845)	1070(855)							

ALTERNATIVE PROCEDURE BASE TURN REVERSAL
From VOR ADN fly outbound on QDR 155° (CAT A,B) or QDR 145° (CAT C,D) **not below 4000**. At ADN DME 12 descend to **not below 2500**. At ADN DME 17.4 (I-ABD D10) turn right to intercept FAT. When established continue as for main procedure.

DIRECT ARRIVAL FROM AIRWAY P600 (Not available without VOR DME ADN)
Request clearance for direct approach before reaching GLESK. When cleared descend to **not below 4000** at ADN DME 26. At ADN DME 25, turn right onto nominal track 087° to intercept and follow ADN DME 20 arc anticlockwise. After passing VOR ADN R200 descend to **not below 3200**. (See plan).

NOTE 1 FAT offset 1.8° west of RWY 34 C/L.
2 Note FAT passes 0.15NM west of DOWNI.
3 I-ABD DME and ADN DME not co-located. Ensure correct range cross check is used for the DME received.

CHANGE (4/26): MAG INFO REVISED.

AERO INFO DATE 02 FEB 26

AD 2-EGPD-8-6